

## Urban Street Series

Smart Integrated LED STREET LUMINAIRE

# Urban Street



PATHWAYS

RESIDENTIAL ROADS

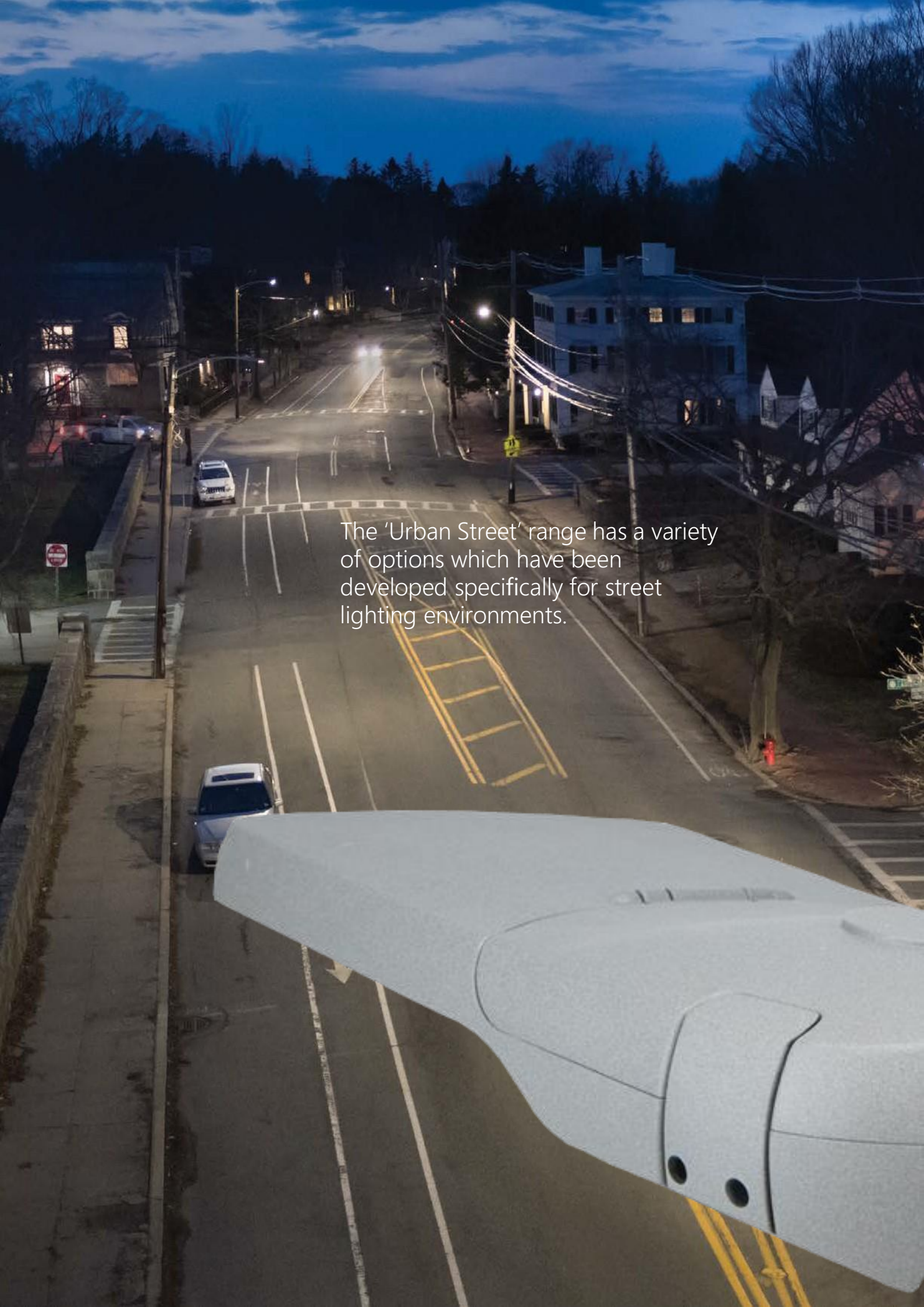
HIGH SPEED STREET



STREETS, PATHS AND CYCLE PATHS



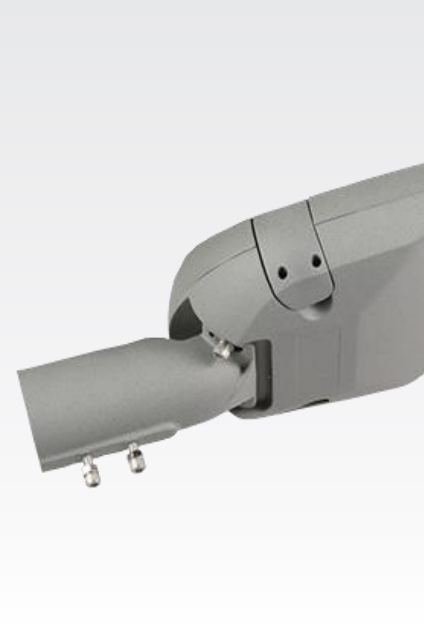
ONE



The 'Urban Street' range has a variety of options which have been developed specifically for street lighting environments.

Urban Street





## Innovation and efficiency

The new 'Urban Street' range is a family of luminaires developed to deliver an innovative and modern lighting system for a range of street lighting applications.



The product design process focuses on making the most efficient and reliable technology a reality. This aspiration has resulted in developments with lasting impact. In other words, our work ensures we are delivering the latest technologies with class leading quality. With the introduction of new age luminaires we are continuing this trend. Low profile styling, adaptable mounting design, and customized optics that allow for maximum column spacing, lighting and uniformity.

### Optics / light source

Available with a variety of optical packages

- > Lumen packages ranging from 3,000 to 19,000 lumens
- 2700K to 6500K colour temperature
- 80 000 hours life
- > +/- 15° tilting

### Approvals

IP 66 light engines (BS EN (IEC) 60598-1)  
IP 66 gear compartment (BS EN (IEC) 60598-1)  
IEC 60598-2-3  
-30°C to +40°C  
IK08 (EN 62262)



Lumen range: 3,000 to 19,000  
Power Consumption: 30W to 150W  
Lifetime: 80,000 hours  
Colour Temperature: 2700K or 6500K  
CRI: 70  
Optical IP Rating: IP66  
Housing IP Rating: IP66  
Impact Resistant: IK08

Electrical Class: Class I or II

Material:  
Body: High pressure die-cast aluminium  
Adapter: High pressure die-cast aluminium  
Optic: Tempered glass lens

Mounting:  
Post Top 40/50/60mm Side Entry

Tilting: +/- 15° tilt.

# Features and benefits

## Installation/Maintenance

Convenient luminaire access from the top, via captive screw.  
The LED light engine is separate from the driver, which encourages heat dissipation by way of conduction.



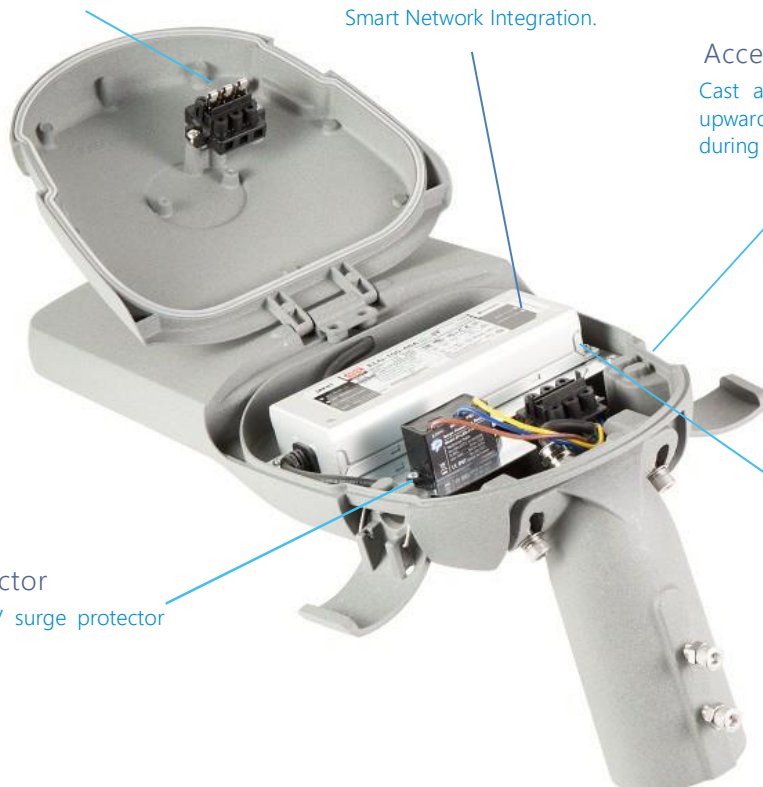
Circuit breaker - Optional  
Ensure the safety during installation and maintenance

Smart Integration  
OFDM /PLC 18 channel driver for Smart Network Integration.

Accessibility  
Cast aluminum cover hinging upwards to allow ease of access during installation and maintenance.

Surge Protector  
10KV and 20KV surge protector optional

LED Driver  
Thermally managed LED drivers with a range of control



# Technical specifications

## Smart Ready

OFDM / PLC 18 channel Smart Driver for Smart integration into PLC Networks with Street Management Application.

## Impact rating - IK08

In accordance with EN 62262, IK08 impact protection rating has been achieved. Maximum protection to ensure the projected life of the luminaire is maintained. The IK08 rating is achieved via the thick tempered glass lens.

## Enclosure - IP66

In accordance with BS EN 60598-1, IP66 luminaire enclosure has been achieved. A series of bespoke seals designed for the luminaire ensure that the IP66 seal is maintained

## Mounting Arrangements

Suitable for post top (67mm) and side entry (60mm/50mm) mounting arrangements.



## Electrical class

Available in CI and CII.

## Overvoltage surge protector

Can be specified to include an overvoltage protection system, that protects the electronic parts of the luminaire against overvoltage of up to 20KV/KA,





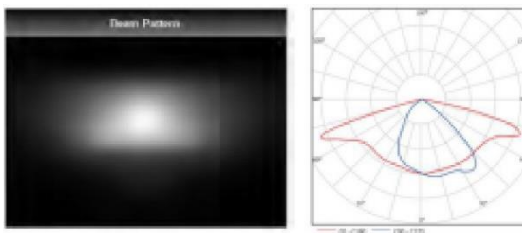
## Technical Information

Modle No	GRNOFDMPL6		GRNOFDMPL10		GRNOFDMPL15		GRNOFDMPL20	
Size	530*200*120mm		608*234*122mm		673*260*122mm		794*320*122mm	
Holder	48mm		48mm or 60mm		60mm		60mm or 76mm	
Watts	<b>40W</b>	<b>60W</b>	<b>80W</b>	<b>100W</b>	<b>120W</b>	<b>150W</b>	<b>180W</b>	<b>200W</b>
Luminous	5000-5200	7800 - 8400lm	10400 - 11200lm	13000 - 14000lm	15600 - 16800lm	19500 - 21000lm	23400 - 25200lm	26000 - 28000lm
LED Qty	72pcs Smd3030	72pcs SMD3030	144pcs SMD3030	144pcs SMD3030	192pcs SMD3030	192pcs SMD3030	240pcs SMD3030	240pcs SMD3030
Material	Aluminum, LED Chip, Lens, Toughened Glass, Screw 3000K,							
Kelvin	4000K, 5000K, 5700K, 6500K or Specified Color							
LED option	SMD3030, SMD5050, CREE (Note: normal are SMD3030 chip)							
CRI	90Ra, 80Ra, 75Ra, 70Ra							
Lens Angle	Use 16 in 1 type lens, offer Type I, Type II, Type III, Type V option (Note: normal are Type III)							
Driver option	Sosen, Inventronics, Meanwell / Smart							
Input Voltage	90-277Vac (Sosen), 110-240Vac (Meanwell ELG), 90-305Vac (Meanwell HLG); 50/60Hz; PF>0.93							
Lifetime	80,000 - 100,000 hours							
IP Level	IP66							
Smart Communications	OFDMA (Orthogonal Frequency Division Multiple Access) GC2200 PLC 18ch transceiver-enabled Digital Power Supply							
Certification	IEC60598-2-3 / 60598-1, IP66, IK08							
Package	<b>URBMI-Mini 30-60W</b>		<b>URBS-S 40-100W</b>		<b>URBM-M 100-150W</b>		<b>URBL-L 150-200W</b>	
			66.5*27.5*15.5 cm/1pc 0.031cbm Empty Housing: Finish Lamp:		72.5*30*15.5 cm/1pc 0.036cbm Empty Housing: Finish Lamp:			

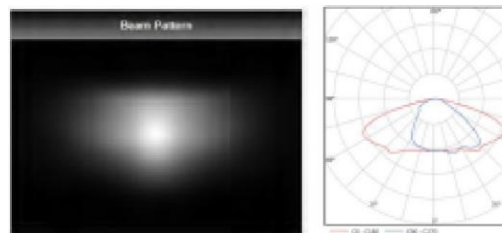


Lighting options

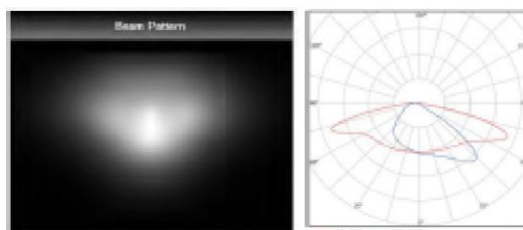
**Type I**



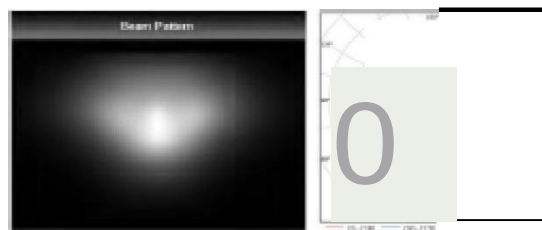
**Type III**



**Type IIII**



**Type V**



# Technical specifications

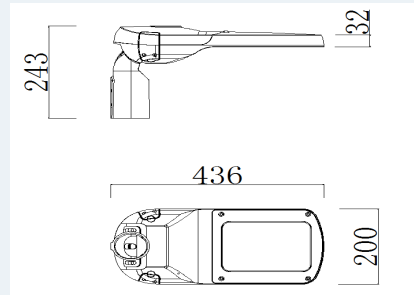
## Weight

Small	4.5kg
Medium	6kg
Large	8kg

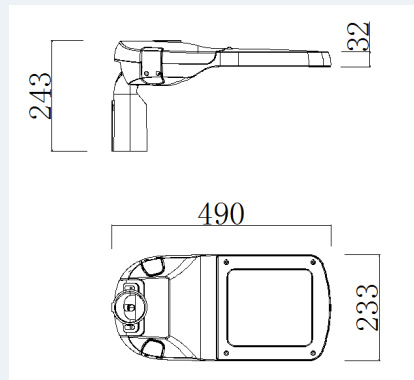
## Temp

-30°C to 40°C

Small



Medium



Large

